



Vitreous Enamelled, Radial Tubular Resistors

Series PVR

Key Features

- 5W to 225W Power Rating.
- All Welded Construction.
- Non-Flammable Vitreous Enamel Coating.
- High Overload and Pulse Handling Capability.
- Axial & Radial Welded Leads for PCB Mounting.
- Quick Connect, Solder Dipped Terminals.
- Reference Standards.
 - MIL-R-26 [CHAR V]
 - JSS 50402 RFHT-2
 - IS 8909



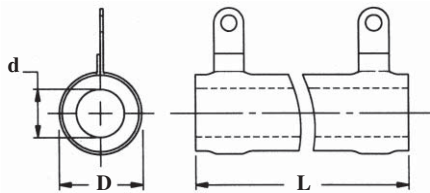
Specifications

Coating	Non-Flammable Vitreous Enamel Coating
Core	Porcelain / Steatite
Terminals	Solder Dipped / Quick Connect Terminals
Element	Copper Nickel or Nickel Chrome Alloy
Tolerance	±5% - 1Ω and over, ±10% - Under 1Ω
Derating	Linearly 100% @25°C to 0% @ 350°C
Power Rating	Based on 25°C Free Air Rating
Over Load	10 x Rated Wattage For 5 Secs
TCR	< 5Ω : ± 260ppm/°C, > 5Ω : ± 200ppm/°C

Electrical Specifications

Type	Power @25°C Watts	Voltage Max Volts	Ohmic Range Ω	
			Min	Max
PVR5	5	125	1R0	1K
PVR20	20	750	1R0	10K
PVR25	25	625	1R0	10K
PVR50	50	1100	1R5	15K
PVR100	100	2100	2R7	20K
PVR175	175	2900	3R3	39K
PVR225	225	3600	3R3	47K

Dimensional Specifications



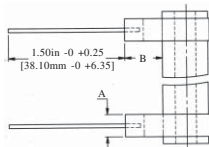
*Note: For Other Sizes and Power Ratings please contact us.

Type	Core Dimensions in Inches [mm]				Terminal Options		Mounting
	Tube OD (D-Nom)	Tube ID (d-Nom)	Length (L)	Length Tol (±)	Standard	Optional	Options
PVR5	0.313 [7.94]	0.188 [4.76]	1.000 [25.40]	0.020 [0.51]	T1	A1/R1	-
PVR20	0.438 [11.11]	0.250 [6.35]	2.000 [50.80]	0.039 [1.01]	T1	A1/R1	-
PVR25	0.563 [14.29]	0.313 [7.94]	2.000 [50.80]	0.039 [1.01]	T2	A2/R2	Z1
PVR50	0.563 [14.29]	0.313 [7.94]	4.000 [101.60]	0.080 [2.03]	T2	T4	Z1
PVR100	0.750 [19.05]	0.500 [12.70]	6.500 [165.10]	0.130 [3.30]	T2	T4	Z2, L1
PVR175	1.125 [28.58]	0.750 [19.05]	8.500 [215.90]	0.170 [4.32]	T3	T2, T4	Z3, L2
PVR225	1.125 [28.58]	0.750 [19.05]	10.500 [266.70]	0.210 [5.33]	T3	T2, T4	Z3, L2

Radial Lead

(For Styles : R1, R2)

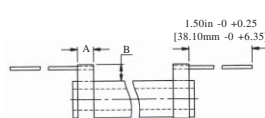
Terminal Style	Dimensions in Inches [mm]	
	A	B
R1	0.125 [3.18]	0.315 [8.00]
R2	0.188 [4.76]	0.315 [8.00]



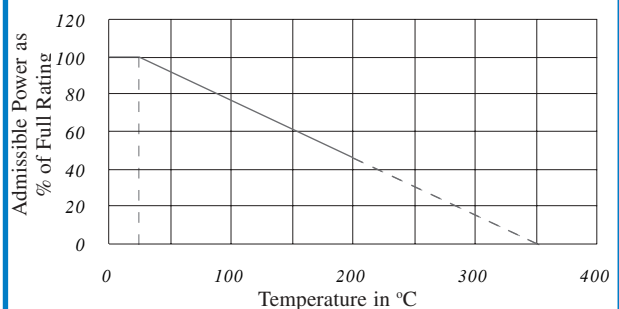
Axial Lead

(For Styles : A1, A2)

Terminal Style	Dimensions in Inches [mm]	
	A	B
A1	0.125 [3.18]	0.315 [8.00]
A2	0.188 [4.76]	0.315 [8.00]



Derating Curve²

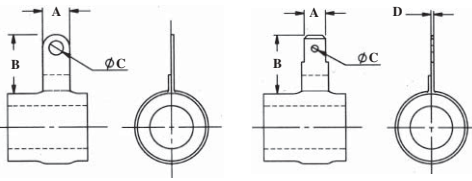


Solder Dipped

(For Styles : T1, T2, T3)

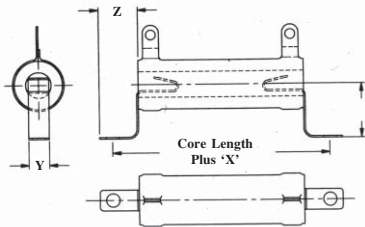
Quick Connect

(For Style : T4)



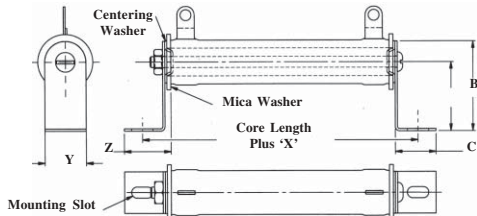
Terminal Style	Dimensions in Inches [mm]			
	A	B	C	D
T1	0.188 [4.76]	0.438 [11.11]	0.102 [2.60]	-
T2	0.250 [6.35]	0.563 [14.29]	0.165 [4.20]	-
T3	0.313 [7.94]	0.625 [15.88]	0.197 [5.00]	-
T4	0.250 [6.35]	0.625 [15.88]	0.078 [2.00]	0.031 [0.79]

Push-In Type Z Clips



Bracket Type	Dimensions in Inches [mm]				
	X	H	Y	Z	Hole (Dia)
Z1	0.625 [15.88]	0.672 [17.07]	0.250 [6.35]	0.469 [11.91]	0.161 [4.09]
Z2	0.719 [18.26]	1.228 [31.20]	0.375 [9.53]	0.625 [15.88]	0.196x0.260 [4.98]x[6.60]
Z3	0.813 [20.64]	1.291 [32.80]	0.500 [12.70]	0.688 [17.46]	0.196x0.260 [4.98]x[6.60]

Horizontal Thru - Bolt



Bracket Type	Dimensions in Inches [mm]						
	X	Y	Z	H	Mounting Slot	C	B
L1	1.063 [26.99]	0.750 [19.05]	0.859 [21.83]	1.250 [31.75]	0.219x0.438 [5.56]x[11.11]	0.750 [19.05]	1.750 [44.45]
L2	1.063 [26.99]	1.250 [31.75]	1.000 [25.40]	1.500 [38.10]	0.281x0.563 [7.14]x[14.29]	0.875 [22.23]	2.125 [53.98]

To Order - Please Specify

PEC Type	Ohmic Value	Tolerance	Terminal	Packing Style	Release Condition	Mounting Hardware
PVR25**	0.1 Ohm » 0R1/R10 1 Ohm » 1R0 1 KOhm » 1K0 10.7 KOhm » 10K7	1% » F 2% » G 5% » J 10% » K	Standard » S Optional » Specify Custom Design » M (Please Specify Details)	Bulk » B	Commercial » X	If Required Specify Bracket Type

A Sample Part No.: **PVR25 1K0JR2BXZ1**

** For Non-Inductive Version, Please specify PVR25N

Notes

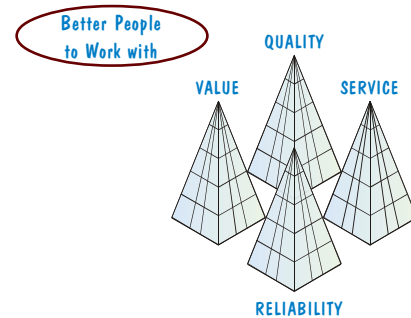
- 1 On request we undertake tests for Batch Acceptance to a specified Reference Standard.
- 2 The Derating Curve specifies the maximum allowable Power at a particular ambient temperature while ensuring that the maximum surface temperature remains within the designed limit.
- 3 When the Resistor is subjected to a Pulse Load, please ensure that the *average* Power dissipated remains below the rated Power specified.
- 4 Resistor performance with Pulse Loads will have to be application tested. Please utilise our Pulse Application Questionnaire for selecting a suitable type or for requesting any design-in assistance from us.

Marketing Director
John A Stooke
Phone : +44 1793 737269
Mobile : +44 7836 609360
johnstooke@peccomponents.com

Global Sales Co-ordinator
K. K. Sajeev
Phone : +91 40 27126228 (Ext 213)
Mobile : +91 98666 55628
sales@peccomponents.com

European Sales
Gerhard Phalke
Phone : +49 8445 9299 755
Mobile : +49 151 55005510
pec@gerhard-pahlke.de

To offer our products through regionally trusted services we have territory-wise and product-wise distribution, franchising, resale and private brand labelling arrangements. For cost-effective and enduring solutions to your needs, for tailored stocking/delivery scheduling, logistics and administrative support, please do not hesitate to contact us or any of our associated representatives, coordinators and product specialists.



Thoughtful engineering and production by a well trained work-force, backed by strong design and development skills, enable us to maintain a level of manufacture and service recognised internationally.
At PEC we offer well-tuned customised support.