

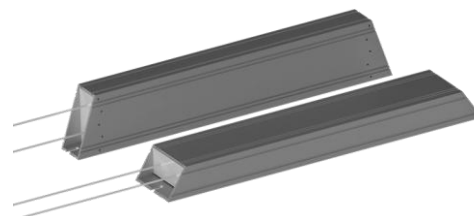


ALUMINIUM HOUSED RESISTOR; PROFILE – 60 X 31, 31 X 60

PHCH/PHCV

The PHCV/PHCH Aluminium Housed resistor are compact high power resistors. They are designed to absorb large pulse and overloads and are well suited for applications like braking and precharge. This high impulse absorption capability makes them well suited for use in power electronic circuits like frequency convertors and robotic controls.

Forced air cooling can significantly improve the performance of the resistor.



GENERAL SPECIFICATION

Resistor Type	PHCV/PHCH			
Tolerance	$\pm 5\%$, $\pm 10\%$			
Maximum Operating Voltage V_{AC} (f=50 Hz)	1000V; in accordance with UL508 specification reduced to 600V			
Maximum Operating Voltage V_{DC}	1414V; in accordance with UL508 specification reduced to 848V			
Insulation Resistance	$\geq 100M\Omega$ @ 1000 VDC			
Dielectric Strength	3500VAC for 1 Minute Between Terminal and Aluminium Body			
Short Term Overload (duty cycle -overload factor)*	Duty Cycle (sec)	1 second	5 seconds	40 seconds
	Over load Factor	$30 * P_{n \max}$	$11 * P_{n \max}$	$2.25 * P_{n \max}$
TCR	$\leq 200ppm/^{\circ}C$			
Resistor Element	Wire Wound			
Cable(L)	300 mm Standard; PTFE Insulated; 1000V; 200°C			
Resistor Body	Anodized Extruded Aluminium Profile			
Ingress Protection	IP54			

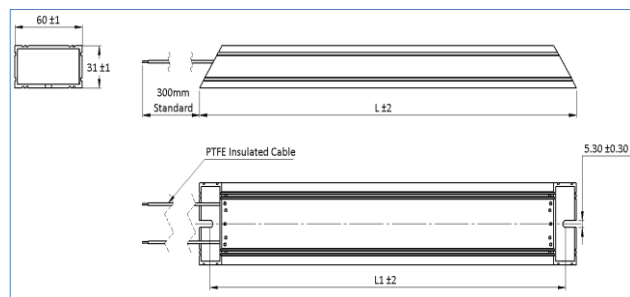
*These overload factors are valid for a total cycle time of 120s and the resistance value is about 33 ohms. For any further information please contact us.

TECHNICAL DATA

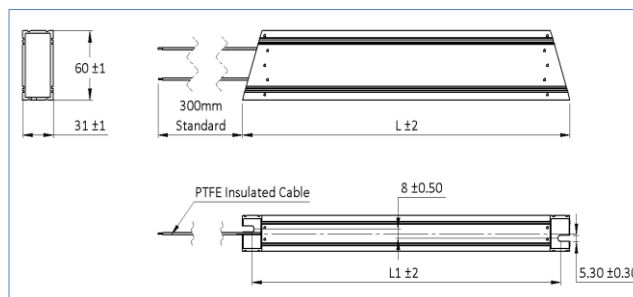
Type	$P_{n \max}$ @ 40°C [#]		P_n @ 40°C [#]		Resistance Range (Ω)	L (mm)	L1 (mm)	Typical Weight (g)
	In Watts	Max Temp Rise ($^{\circ}C$)	In Watts	Max Temp Rise ($^{\circ}C$)				
PHCH/PHCV165	200	280	110	225	0R5 – 6K8	165	146	530
PHCH/PHCV215	300	290	155	230	0R5 – 8K2	215	196	710
PHCH/PHCV265	400	305	200	230	0R5 – 10K	265	246	880
PHCH/PHCV335	500	325	270	240	1R – 10K	335	316	1180
PHCH/PHCV405	600	320	330	240	1R – 10K	405	386	1460

#Above mentioned power ratings and temperatures are evaluated when the resistor is mounted vertically without any heat sink attached to it.

COMPONENT DRAWING:



PHCH



PHCV



Precision Electronic Components Mfg. Co.

Premium Grade Components

For Original, Innovative and Cost-Effective Solutions to demanding Specifications



Committed to Quality
Since 1972

ALUMINIUM HOUSED RESISTOR; PROFILE – 60 X 31, 31 X 60

PHCH/PHCV

ORDERING CODE:

PEC Type	Ohmic Value	Tolerance	Packing	Termination	Cable Length
PHCH/PHCV165 PHCH/PHCV215 PHCH/PHCV265 PHCH/PHCV335 PHCH/PHCV405	10Ω – 10R 1500Ω – 1K5 2000 Ω – 2K	5%-J 10%-K	Bulk - B	Cable - C Special - M	Standard length-X Custom length-M

FULL PART NUMBER: PHCV335-6R-JBCM-1m

Disclaimer

ALL PRODUCT, PRODUCT SPECIFICATIONS AND DATA ARE SUBJECT TO CHANGE WITHOUT NOTICE TO IMPROVE RELIABILITY, FUNCTION OR DESIGN OR OTHERWISE.

Precision Electronic Components Mfg. Co., its affiliates, agents, and employees, and all persons acting on its or their behalf (collectively, "PEC"), disclaim any and all liability for any errors, inaccuracies or incompleteness contained in any datasheet or in any other disclosure relating to this product.

PEC makes no warranty, representation, or guarantee regarding the suitability of the products for any particular purpose or the continuing production of any product. To the maximum extent permitted by applicable law, PEC disclaims (i) any and all liability arising out of the application or use of any product, (ii) any and all liability, including without limitation special, consequential, or incidental damages, and (iii) any and all implied warranties, including warranties of fitness for particular purpose, non-infringement, and merchantability.

Statements regarding the suitability of products for certain types of applications are based on PEC's knowledge of typical requirements that are often placed on PEC products in generic applications. Such statements are not binding statements about the suitability of products for a particular application. It is the customer's responsibility to validate that a particular product with the properties described in the product specification is suitable for use in a particular application. Parameters provided in datasheets and/or specifications may vary in different applications and performance may vary over time. All operating parameters, including typical parameters, must be validated for each customer application by the customer's technical experts. Product specifications do not expand or otherwise modify PEC's terms and conditions of purchase, including but not limited to the warranty expressed therein.

Except as expressly indicated in writing, PEC products are not designed for use in medical, life-saving, or life-sustaining applications or for use in any other application in which the failure of the PEC product could result in personal injury or death. Customers using or selling PEC products not expressly indicated for use in such applications do so at their own risk. Please contact authorized PEC personnel to obtain written terms and conditions regarding products designed for such applications.

No license, express or implied, by estoppels or otherwise, to any intellectual property rights is granted by this document or by any conduct of PEC. Product names and markings noted herein may be trademarks of their respective owners.

RoHS Statement

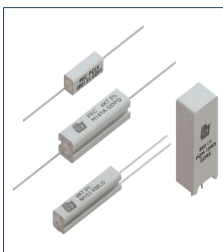
Precision Electronic Components Mfg. Co. hereby certifies that all its products that are identified as RoHS-Compliant fulfil the definitions and restrictions defined under Directive 2011/65/EU of the European Parliament and of the Council of June 8, 2011 on the restriction of the use of certain hazardous substances in electrical and electronic equipment (EEE) – recast, unless otherwise specified as non-compliant.



Aluminium Heaters & Resistors



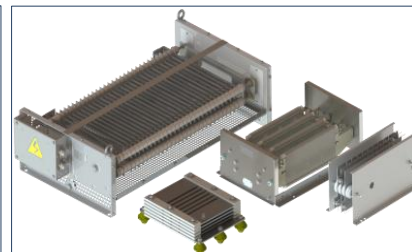
Tubular Power Resistor



Boat & Ceramic Case Resistors



Load Bank



Traction Resistors